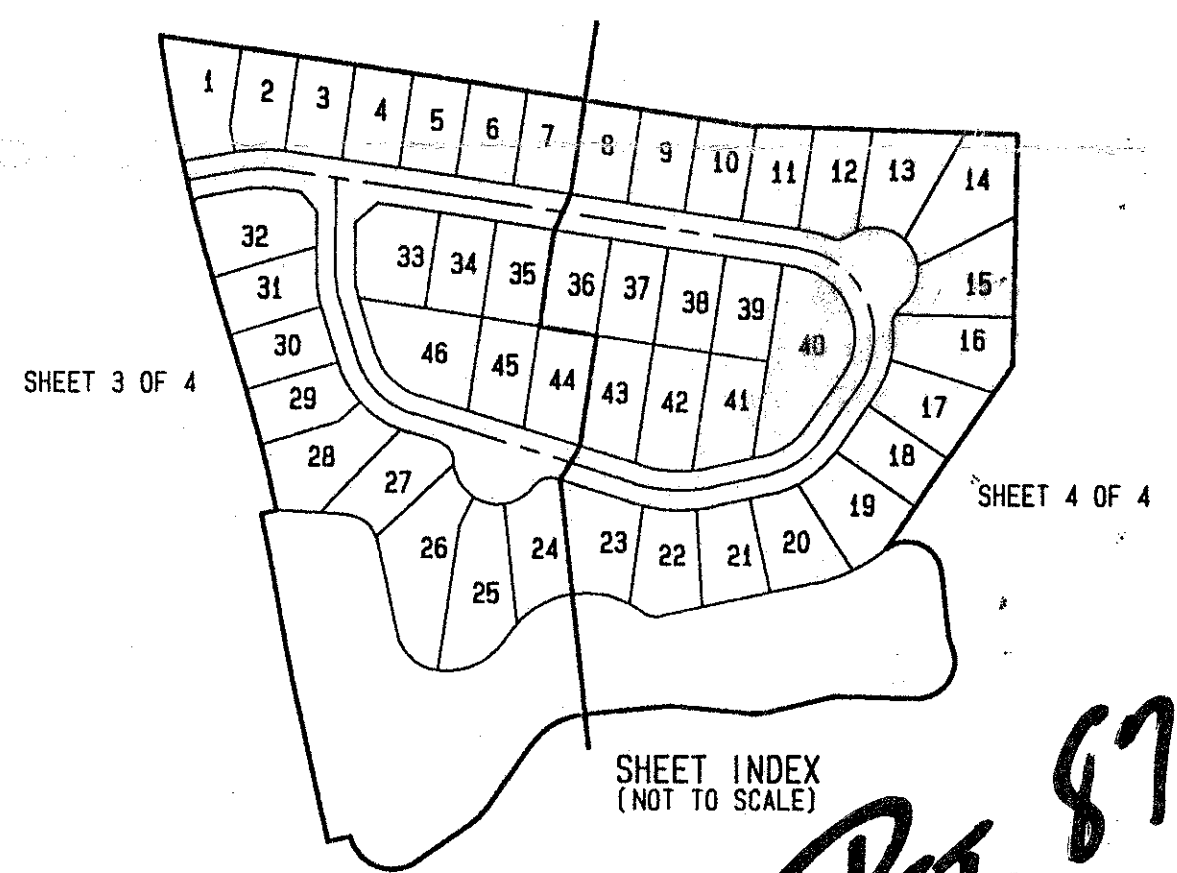
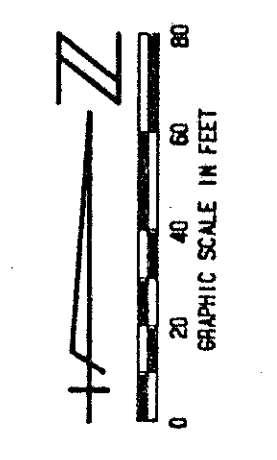


STATE OF FLORIDA
 COUNTY OF PALM BEACH
 THIS PLAT WAS FILED FOR
 RECORD _____ DAY OF _____
 AD, 1995 AND DULY RECORDED
 IN PLAT BOOK _____ ON PAGES
 AND _____
 DOROTHY H. WILKEN, CLERK
 BY: _____, D.C.

WINSTON TRAILS PARCEL THIRTEEN

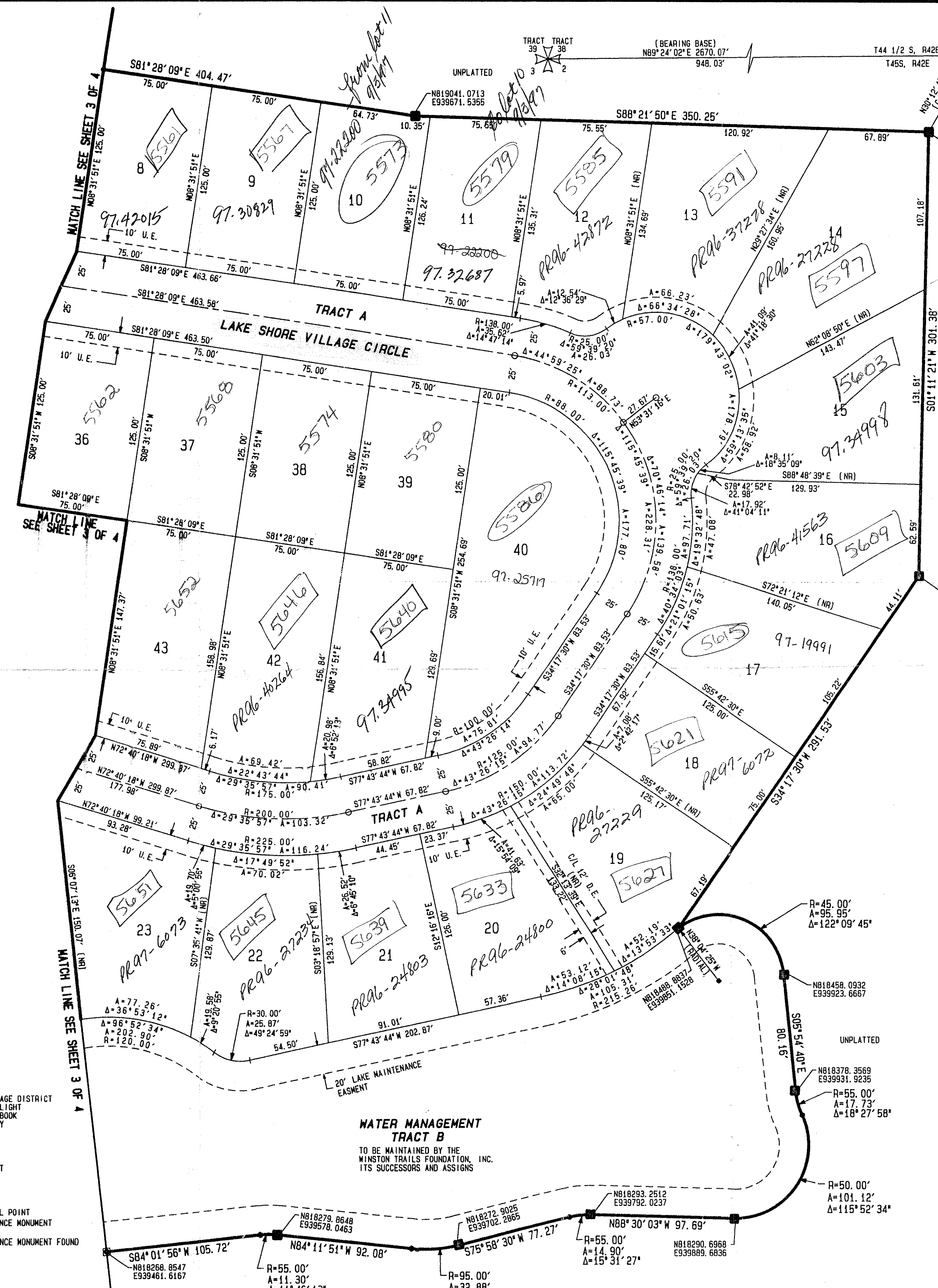
PART OF WINSTON TRAILS P. U. D.
 SITUATE IN SECTION 2, TOWNSHIP 45 SOUTH, RANGE 42 EAST
 PALM BEACH COUNTY, FLORIDA
 JULY, 1995
 SHEET 4 OF 4

CIRCUIT COURT SEAL



*PET. 87-112
 ALLOC. #0001
 5/2/2/I*

*2/45/42
 RSI/PUD
 INSP. #6*



COORDINATE NOTE:
 ALL DISTANCES ARE GROUND
 SCALE FACTOR = 1.0000338
 DATUM = NAD 83 1980 ADJUSTMENT
 ZONE = FLORIDA EAST
 LINEAR UNIT = US SURVEY FEET
 COORDINATE SYSTEM 1983 STATE PLANE
 TRANSVERSE MERCATOR PROJECTION
 GROUND DISTANCE X SCALE FACTOR = GRID DISTANCE

THIS INSTRUMENT WAS PREPARED BY MARY HANNA CLOFFELTER, P.L.S., IN THE OFFICES OF MOCK, ROOS & ASSOCIATES, INC., 5720 CORPORATE WAY, WEST PALM BEACH, FLORIDA 33407.

PCN 00-42-45-02-09-000-0-0

SHEET 4 OF 4

MOCK, ROOS & ASSOCIATES, INC.
 5720 CORPORATE WAY, WEST PALM BEACH, FL. 33407 (407) 683-3113

SCALE: 1"=40'
 DATE: JULY 1995
 P. A. NO. 95105.00
 DWG. NO. 45-42-02-23

WINSTON TRAILS PARCEL THIRTEEN
 PART OF 'WINSTON TRAILS, P. U. D.'
 SECT. 2, TOWNSHIP 45 SOUTH, RANGE 42 EAST

0587-016

SUBDIVISION: Winston Trails Parcels B
 PLAT: 51
 FLOOD MAP: 175B
 ZONING: RS
 ZIP CODE: 33463
 PUB. NAME: Winston Trails Area B

Rev. 11-01-95
 CADD FILE: WINTAP19

- LEGEND:
- L. W. D. D. LAKE WORTH DRAINAGE DISTRICT
 - FPL FLORIDA POWER & LIGHT
 - ORB OFFICIAL RECORD BOOK
 - PBCD PALM BEACH COUNTY
 - P. B. PLAT BOOK
 - Pp. PAGES
 - Pg. PAGE
 - U. E. UTILITY EASEMENT
 - D. E. DRAINAGE EASEMENT
 - TWP. TOWNSHIP
 - RANGE RANGE
 - NON RADIAL
 - C/L CENTERLINE
 - PERMANENT CONTROL POINT
 - PERMANENT REFERENCE MONUMENT
 - SET PLS. 4763
 - PERMANENT REFERENCE MONUMENT FOUND